

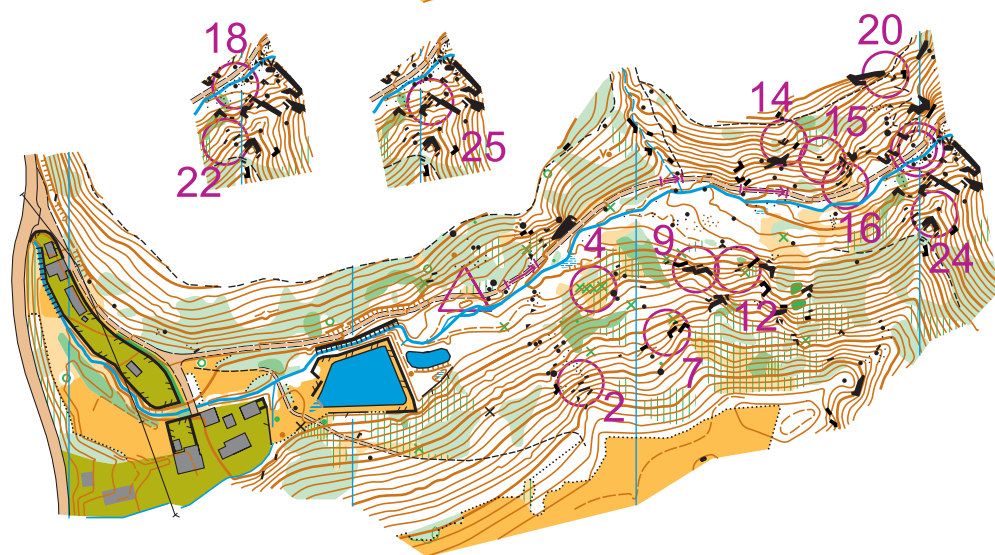
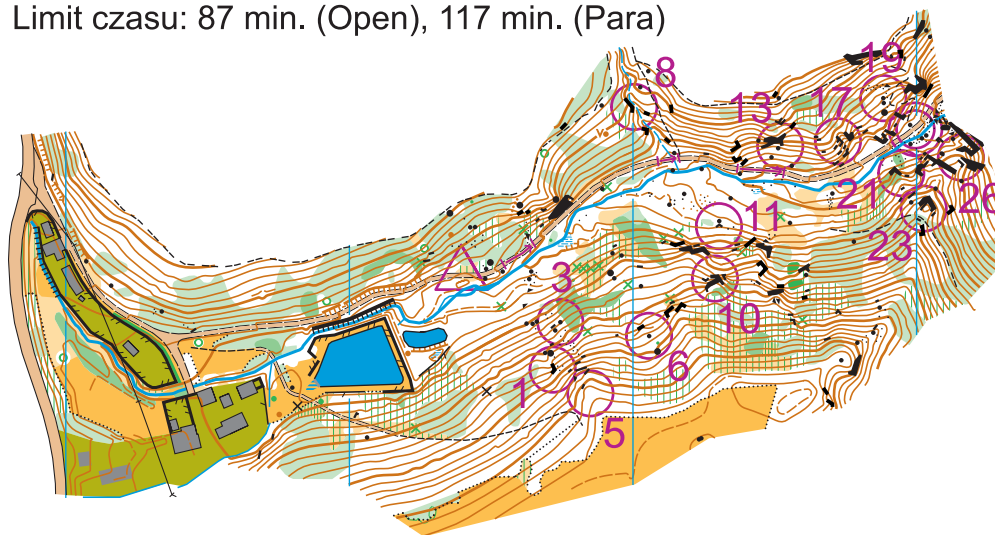
1:4000, e 2m



Polish Trail-O Championships  
European Cup in Trail-O  
IOF World Ranking Event  
2019 Wleń, Poland

ECTO#8	0,3 km			
1	A-C ←	⌘		└
2	A-C	⌘		
3	A-C ↗	▲		○
4	A-B	⌘ ⊗		
ONE-WAY				
5	A-B	⌘		
6	A	▲		○
7	A-C ←	⌘		└
ONE-WAY				
8	A-B ↖	⌘		>
9	A-C ↓	⌘		∨
10	A-C ↓	⌘		○
11	A-C	⌘		└
12	A-B ↙	⌘		└
13	A-B	⌘		└
ONE-WAY				
14	A	⌘		└
15	A-B	⌘		└
16	A-C ↓	⌘		└
17	A-C ↑	⌘		
18	A-B	⌘ ▲		○
19	A-B ↑	⌘ ▲		○
20	A ↖	⌘		└
21	A ↖	⌘		∨
22	A ←	⌘		└
23	A	⌘		○
24	A	⌘		○
25	A ↙	⌘		○
26	A ↘	⌘		└

Course length: 300m  
Time limit: 87 min. (Open); 117 min. (Para)  
Długość trasy: 300m  
Limit czasu: 87 min. (Open), 117 min. (Para)



DOLNOŚLĄSKI  
ZWIĄZEK  
ORIENTACJI  
SPORTOWEJ



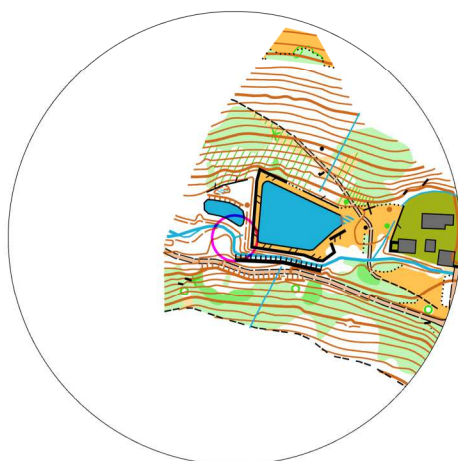
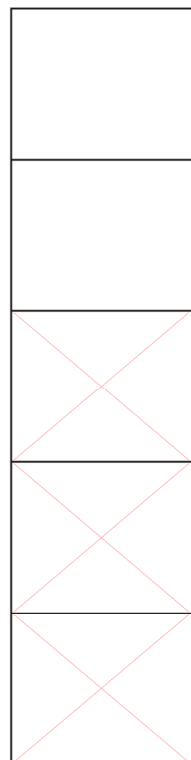
INTERNATIONAL ORIENTEERING FEDERATION

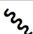
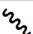

# Cluster 1

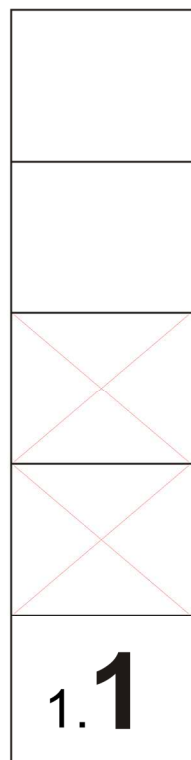
Map scale 1 : 4000  
Contour interval 2 m

3 tasks  
6 flags

Limit 90 sec  
Penalty 30 sec  
Warning after 70 sec



1.1 A-F   



**A**  
Alfa

**B**  
Bravo

**C**  
Charlie

**D**  
Delta

**E**  
Echo

**F**  
Foxtrot



1.2	A-F	↳			
-----	-----	---	--	--	--

1.2

**A**  
Alfa

**B**  
Bravo

**C**  
Charlie

**D**  
Delta

**E**  
Echo

**F**  
Foxtrot



1.3	A-F	⊙			○
-----	-----	---	--	--	---

1.3

**A**  
Alfa

**B**  
Bravo

**C**  
Charlie

**D**  
Delta

**E**  
Echo

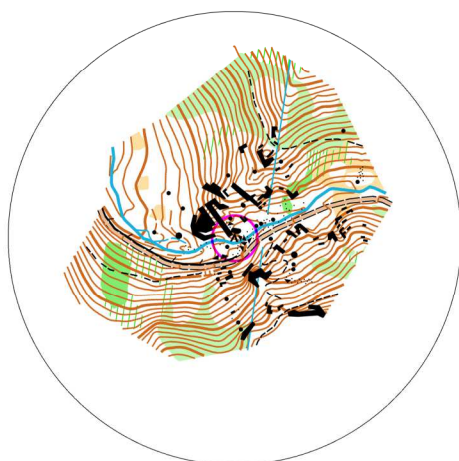
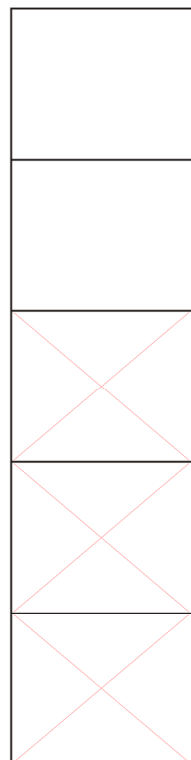
**F**  
Foxtrot

# Cluster 2

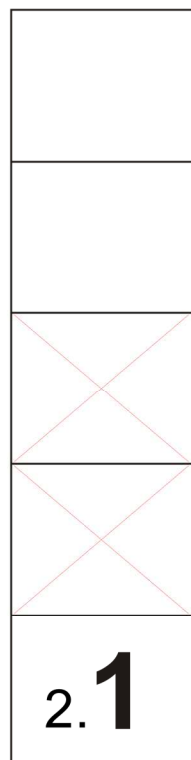
Map scale 1 : 4000  
Contour interval 2 m

3 tasks  
6 flags

Limit 90 sec  
Penalty 30 sec  
Warning after 70 sec



2.1 A-F	↗					
---------	---	--	--	--	--	--



**A**  
Alfa

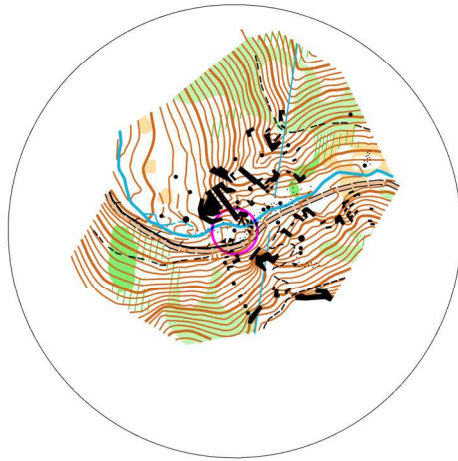
**B**  
Bravo

**C**  
Charlie

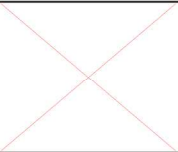
**D**  
Delta

**E**  
Echo

**F**  
Foxtrot



2.2 A-F ▲ ○



2.2

**A**  
Alfa

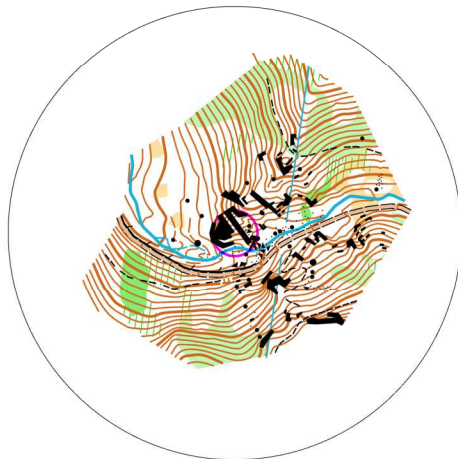
**B**  
Bravo

**C**  
Charlie

**D**  
Delta

**E**  
Echo

**F**  
Foxtrot



2.3 A-F ▯ <



2.3

**A**  
Alfa

**B**  
Bravo

**C**  
Charlie

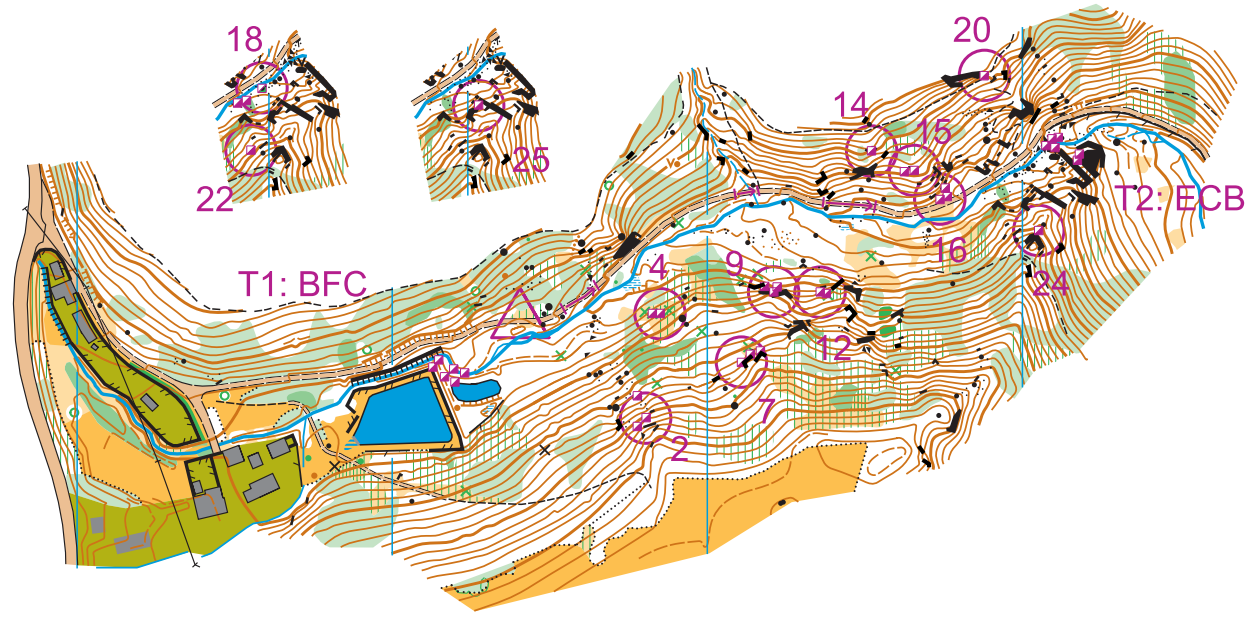
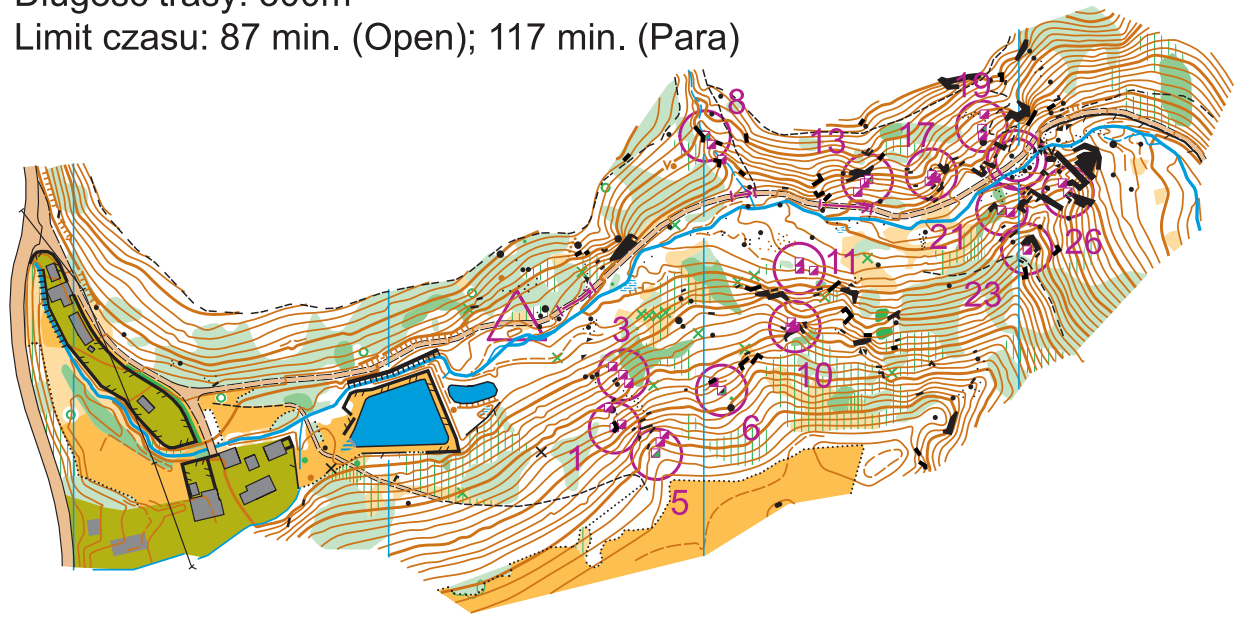
**D**  
Delta

**E**  
Echo

**F**  
Foxtrot

ECTO#8	0,3 km					
1	A-C	←	≡		⌋	C
2	A-C		≡			B
3	A-C	↗	▲		○	B
4	A-B		⊗			A
ONE-WAY						
5	A-B		≡			Z
6	A		▲		○	Z
7	A-C	←	≡		⌋	C
ONE-WAY						
8	A-B	↖	≡		⌋	Z
9	A-C	↓	≡		⌋	B
10	A-C	↓	≡		○	A
11	A-C		≡		⌋	C
12	A-B	↙	≡			B
13	A-B		≡		⌋	Z
ONE-WAY						
14	A	→	≡		⌋	A
15	A-B	→	≡		⌋	B
16	A-C	↓	≡			A
17	A-C	↑	≡			C
18	A-B		▲		○	Z
19	A-B	↑	▲		○	Z
20	A	↖	≡		⌋	A
21	A	↖	≡		⌋	Z
22	A	←	≡		⌋	A
23	A		○		○	A
24	A		≡			A
25	A	↙	≡		○	A
26	A	↙	≡		↘	Z

Course length: 300m  
 Time limit: 87 min. (Open); 117 min. (Para)  
 Długość trasy: 300m  
 Limit czasu: 87 min. (Open); 117 min. (Para)



1:4000; e = 2m;